

Le **griglie magnetiche** trovano largo impiego nella deferizzazione di prodotti fini e granulari, garantendo ottimi risultati con la massima facilità di installazione.

Di norma montate in Condotte.

Prive di alimentazione e di rapido montaggio sono le apparecchiature più idonee.

Caratteristiche costruttive:

- Realizzate integralmente in acciaio inox
- Barre Magnetiche diametro 32 e 25 millimetri equipaggiate con magneti in ferrite o neodimio, realizzate integralmente in Acciaio Inox
- Esecuzioni speciali a richiesta

The **magnetic grids** are used for deferization of fines and granulated products and guarantee optimal results with maximum facility of installation. Usually they are assembled in a pipe. They represent the most suitable devices being not fed which can be assembled with ease.

Construction features:

- made up of stainless steel
- magnetic bars diameter 32 and 25 mm equipped with ferrite or neodymium magnets. Totally realized with stainless steel
- special manufactures, upon request.

GMC



GMC+G



GMP



GMC-R



GMR



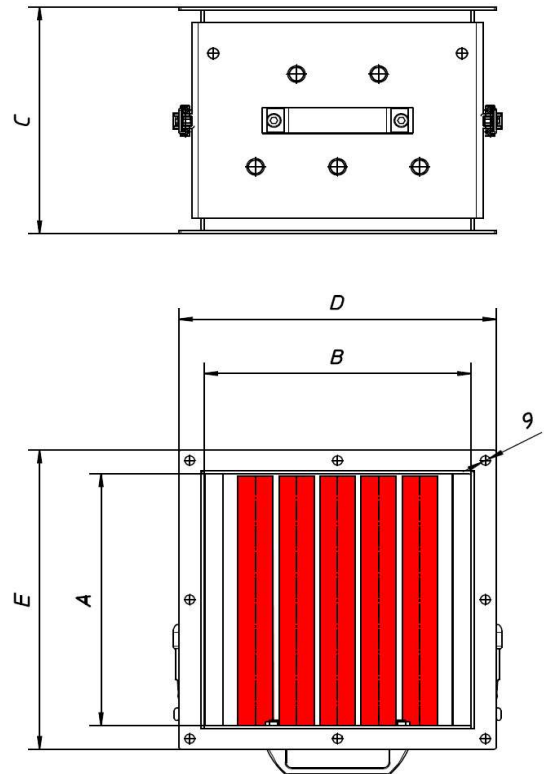
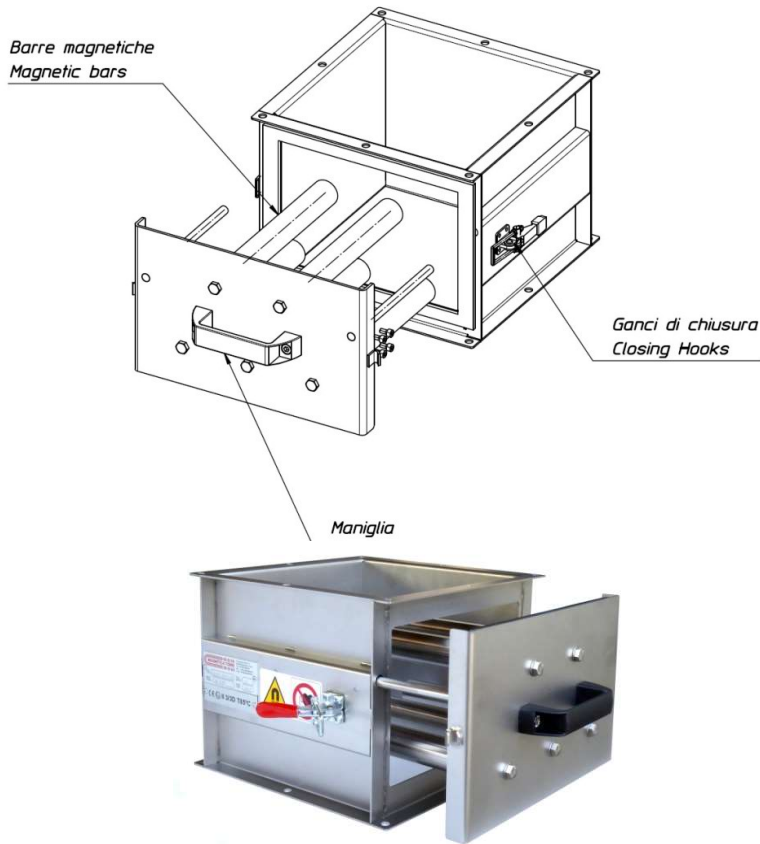
GMT





GMS



GMC GRIGLIE MAGNETICHE A CASSETTO – MAGNETIC GRIDS DRAWER



Certificazione: Certification:	M.O.C.A.	ATEX 22
		

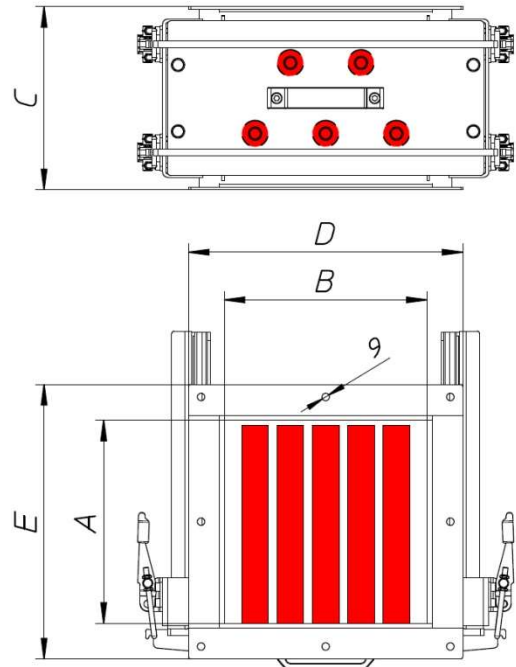
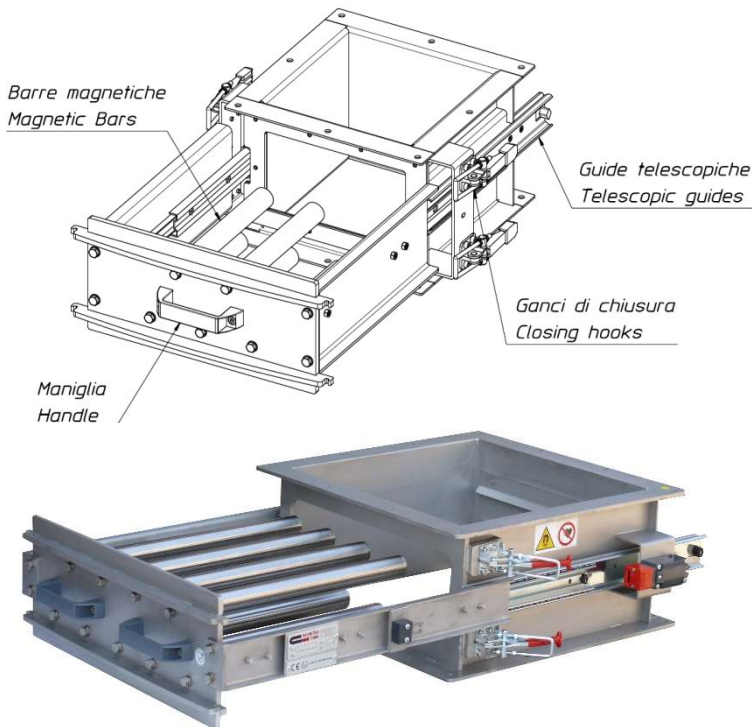
Dimensioni/Dimensions (mm)



Tipo/Type	A	B	C	D	E	Barre/Bars	Gauss ±3%			
							NEODIMIO Ø25	FERRITE Ø32	NEODIMIO Ø32	NEODIMIO Ø32
GMC16-16	160	160	150	200	200	3	/	2200	/	/
GMC16-16H	160	160	150	200	200	3	11 000	/	10 000	12 000
GMC20-20	200	200	220	240	240	5	/	2200	/	/
GMC20-20H	200	200	220	240	240	5	11 000	/	10 000	12 000
GMC22-22	220	220	220	260	260	5	/	2200	/	/
GMC22-22H	220	220	220	260	260	5	11 000	/	10 000	12 000
GMC25-25	250	250	220	290	290	5	/	2200	/	/
GMC25-25H	250	250	220	290	290	5	11 000	/	10 000	12 000
GMC30-30	300	300	220	340	340	5	/	2200	/	/
GMC30-30H	300	300	220	340	340	5	11 000	/	10 000	12 000

GMC-G GRIGLIE MAGNETICHE A CASSETTO- MAGNETIC GRIDS DRAWER

Griglie magnetiche a cassetto con guide telescopiche per estrazione facilitata barre magnetiche.

Magnetic grids with telescopic guides to facilitate the extraction of the magnetic bars.



Certificazione: Certification:	M.O.C.A.	ATEX 22
		

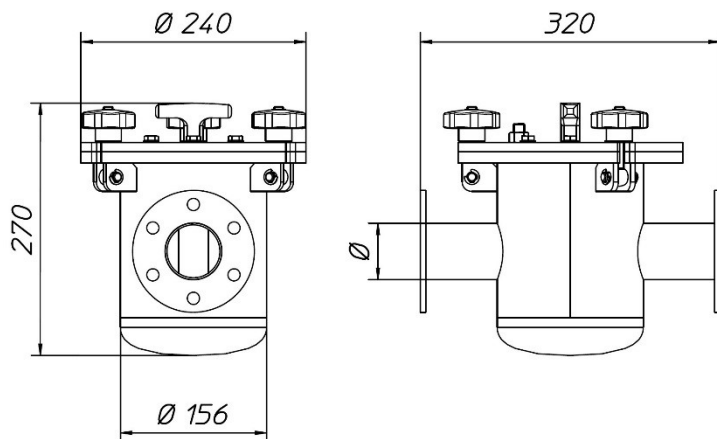
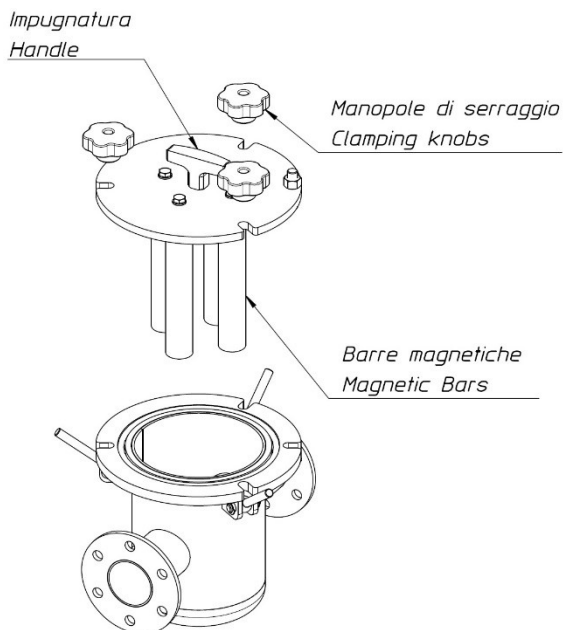
Dimensioni/Dimensions (mm)



Tipo/Type	A	B	C	D	E	Barre/Bars	Gauss ±3%			
							NEODIMIO Ø25	FERRITE Ø32	NEODIMIO Ø32	NEODIMIO Ø32
GMC20-20..G	194	194	220	280	280	5	/	2200	/	/
GMC20-20H..G	194	194	220	280	280	5	11 000	/	10 000	12 000
GMC22-22..G	214	214	220	300	300	5	/	2200	/	/
GMC22-22H..G	214	214	220	300	300	5	11 000	/	10 000	12 000
GMC25-25..G	244	244	220	330	330	5	/	2200	/	/
GMC25-25H..G	244	244	220	330	330	5	11 000	/	10 000	12 000
GMC30-30..G	294	294	220	380	380	5	/	2200	/	/
GMC30-30H..G	294	294	220	380	380	5	11 000	/	10 000	12 000
GMC35-35..G	344	344	220	430	430	7	/	2200	/	/
GMC35-35H..G	344	344	220	430	430	7	11 000	/	10 000	12 000
GMC40-40..G	394	394	220	480	480	9	/	2200	/	/
GMC40-40H..G	394	394	220	480	480	9	11 000	/	10 000	12 000
GMC45-45..G	444	444	220	530	530	9	/	2200	/	/
GMC45-45H..G	444	444	220	530	530	9	11 000	/	10 000	12 000

GMP GRIGLIE MAGNETICHE A POZZETTO / MAGNETIC GRIDS IN PRESSURE

Griglie magnetiche a pozzetto, consentono la deferrizzazione di prodotti sfarinati e granulari in sistemi di trasporto pneumatico.

Magnetic grids in pressre, allow the de-ironing of flour and granular products in pneumatic transport systems.



Certificazione: Certification:	M.O.C.A.	ATEX 22
		

Dimensioni/Dimensions (mm)

Tipo/Type	Ø	Barre/Bars	Gauss ±3%		Pressione max Max pressure
			NEODIMIO Ø25	NEODIMIO Ø32	Bar
GMP16H9-4.25	60.3 / 76.1 / 85 / 88.9 / 101.6	4	9000	/	2
GMP16H11-4.25		4	11000	/	2
GMP16H10-4.32		4	/	10000	2
GMP16H12-4.32		4	/	12000	2

GMC-R GRIGLIE MAGNETICHE ROTANTE- ROTATING MAGNETIC GRIDS

La griglia magnetica rotante permette la deferrizzazione di prodotti che presentano difficoltà di scorrimento quali farine alimentari, amido di mais, polveri di marmo ecc., e che richiedono un elevato grado di purezza.

I pezzi ferromagnetici presenti nel materiale da epurare, arrivando in prossimità delle barre magnetiche permanenti, né vengono attratti e conseguentemente trattenuti; garantendo così un'efficace deferrizzazione.

Il defluire del prodotto è facilitato dalla rotazione delle barre magnetiche interne alla griglia, che permettono la rottura di eventuali grumi.

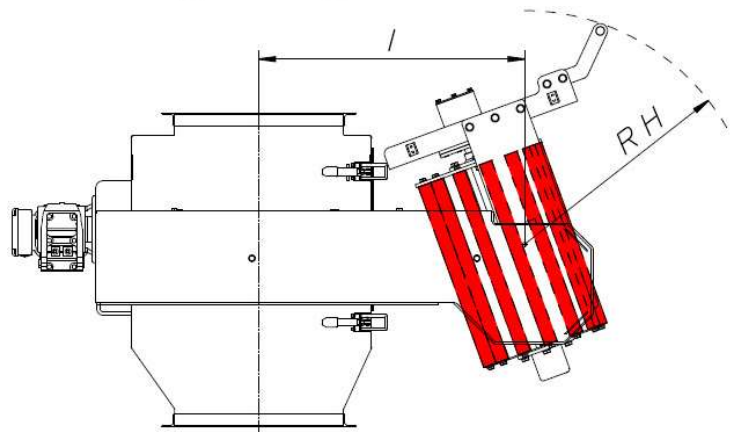
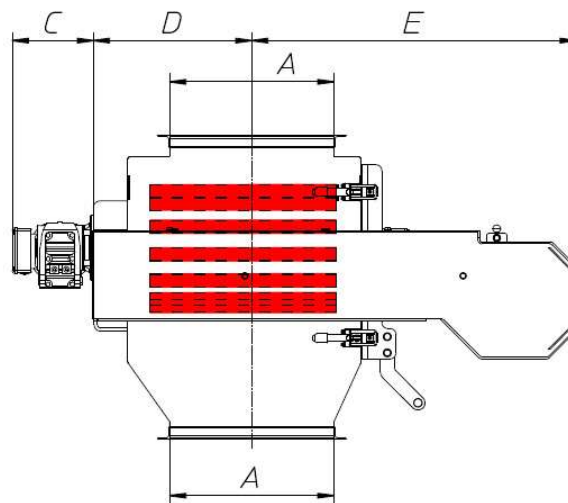
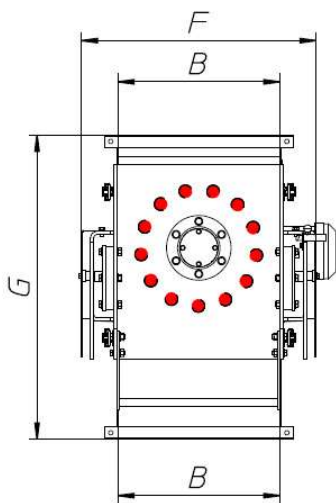
Le operazioni di pulizia ordinaria sono agevolate, dall'estrazione del cassetto su apposite guide che permettono il posizionamento delle barre in verticale, per la pulizia manuale.

Rotating magnetic grids are used for products that have difficult flow characteristics and a tendency to bridge and choke when using traditional magnetic grid. The magnet is ideal for flours, corn starch, marble powders and require a high degree of product purity.

Magnetic metal pieces present in the material to be purified, reaching in proximity of the permanent magnetic bars, are attracted by them and as a result they are held, as a result guaranteeing effective iron removal.

The flow of product is facilitated by the rotation of the magnetic bars internal to the grid. The rotation allows the breaking of any lumps.

Ordinary cleaning operations are facilitated by the drawer extraction on a special guide that allows the rotation of the bars in vertical position.



Certificazione: Certification:	M.O.C.A.	ATEX 22

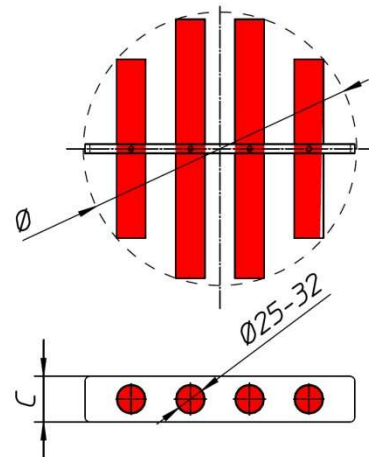
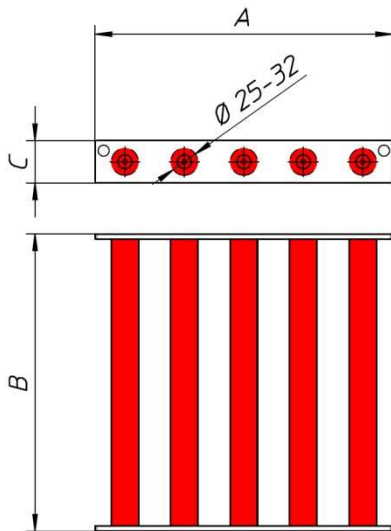
Dimensioni/Dimensions (mm)

Tipo Type	A	B	C	D	E	F	G	H	I	N° Barre N° Bars	Gauss ±3%		
											NEODIMIO Ø32	NEODIMIO Ø32	NEODIMIO Ø32
GMC30-30R	300	300		323	782	480	750	510	615	8	9 000	10 000	12 000
GMC40-40R	400	400		392	803	580	750	560	637	13	9 000	10 000	12 000



RETTANGOLARI-RECTANGULAR GMR

TONDE-ROUND GMT



Certificazione: Certification:	M.O.C.A.	ATEX 22

GMR DIMENSIONI – DIMENSIONS (mm)				
TIPO- TYPE	A	B	C	N°BARRE-BARS
GMR20...	200	200-1000	50	3
GMR25...	250	200-1000	50	4
GMR40...	400	300-1000	50	6
GMR50...	500	500-1000	50	7

GMT DIMENSIONI – DIMENSIONS (mm)			
TIPO- TYPE	Ø	C	N°BARRE-BARS
GMT30	300	50	4
GMT40	400	50	6
GMT50	500	50	7

BARRE MAGNETICHE- MAGNETIC BARS

Le barre magnetiche trovano largo impiego nella deferizzazione di prodotti fini e granulari, garantendo ottimi risultati con la massima facilità di installazione. Di norma montate in tramogge in uscita nelle condotte di trasporto e per la deferizzazione di granaglie, farine, polveri, granuli plastici, segatura ed altri materiali fini. Si eseguono barre Magnetiche di diametro 32 e 25 millimetri equipaggiate con magneti in ferrite o neodimio, realizzate integralmente in Acciaio Inox AISI 316, con foro di fissaggio M8 o M6 su una o entrambe le testate. Idonee per l'utilizzo in ambienti alimentari, certificata M.O.C.A.



The magnetic bars are used for deferization of fines and granulated products and guarantee optimal results with maximum facility of installation. Usually they are assembled in a conical charging hopper or for the iron removal from grain, flour, powders, plastic granules, sawdust, etc. in a pipe. We construct magnetic bars diameter 32 and 25 mm equipped with ferrite or neodymium magnets. Totally realized with stainless steel AISI 316, with M8 or M6 fixing hole on one or both heads. Are ideal for use in food environments, certified M.O.C.A.

Certificazione: Certification:	M.O.C.A.

TIPO- TYPE	Ø (mm)	Lunghezza-Lenght (mm)	T MAX (°C)	Potenza magnetica –Magnetic power Gauss
BT 32	32	100÷1200	120	2200
BT 32ND-R	32	100÷1200	80	6300
BT 32ND10	32	100÷1200	80	10000
BT 32ND12	32	100÷1200	80	12000
BT 32SMC	32	100÷1200	300	9200
BT 25ND	25	100÷700	80	9000
BT25ND11	25	100÷700	80	11000

Griglie magnetiche ad alta intensità magnetica

Le griglie magnetiche stellari, trovano largo impiego nella deferrizzazione di granulati plastici ,granaglie, polveri e similari.

Generalmente sono inserite in tramogge coniche o conglobate in sistemi di condotte in posizioni facilmente accessibili agli operatori addetti alla loro pulizia.

Magnetic grids high magnetic intensity

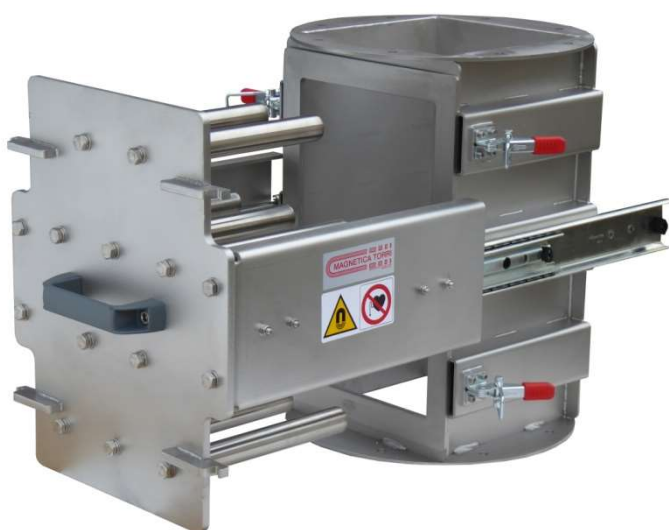
The magnetic grids are used for deferrization of plastic granules, fines and granulated products and guarantee optimal results with maximum facility of installation.

Usually they are assembled in a conical charging hop per with circular , or in a pipe.



Tipo/type GMS150 tonda/round Ø 150mm	Tipo/type GMS200 tonda/round Ø 200mm	Tipo/type GMS200Q quadra/square 200mm

Applicazioni speciali/ Special applications



Magnetica Torri S.r.l. - www.magneticatorri.it

Via Papa Giovanni XXIII,10

25086 REZZATO (BS)

Tel: 0039 30 2594184

Fax: 0039 30 2791545

info@magneticatorri.it